

# NORD TRACK TRACKS

Owner's  
Manual

Manuel  
du propriétaire



NORD TRACK





# NORD TRACK

# TRACK SYSTEM

## OWNER'S MANUAL

Please read this owner's manual carefully from cover to cover. It will help you become familiar with safety recommendations, assembly procedures and proper track operation; it is also recommended to communicate this information to any user.

### TABLE OF CONTENTS

BUYER RECOMMENDATIONS	5
FOR OFF-ROAD USE ONLY	5
SAFETY PRECAUTIONS	5
PREVENTIVE MAINTENANCE	6
INSTALLATION	7
OPERATION	8
MAINTENANCE	9
TRACK TENSION	9
HARDWARE CONDITION CHECK	9
CLEANING	9
DISASSEMBLY	10
DANGEROUS SITUATIONS	10
WARRANTY	10
COVERAGE PERIOD	11
INSTALLATION / UNINSTALLATION	13-15
EXPLODED VIEWS (PART IDENTIFICATION)	15-23
VUES EN ÉCLAT (IDENTIFICATION DES PIÈCES)	15-23

**Nordtrack Inc.**

800 blvd Baril Ouest  
Princeville, QC G6L 3W6  
Toll-free: 1 866 306 7392  
[info@nordtrack.ca](mailto:info@nordtrack.ca)  
[www.nordtrack.ca](http://www.nordtrack.ca)

All rights reserved © 2016 Nordtrack Inc.

---

## RECOMMENDATIONS TO THE BUYER

This owner's manual is designed to facilitate the assembly of NORD TRACK tracks.

### FOR OFF-ROAD USE ONLY

For any safety and operating recommendations concerning the VEHICLE on which you plan to install NORD TRACK tracks, refer to the manufacturer's manual.

For details regarding highway traffic regulations concerning tracks, please contact the authorities in your region, province or country.

**IMPORTANT:** This manual should always accompany the tracks in the event of resale.

**NOTE:** The illustrations contained in this manual are accurate for the product at the time of publication. The information (drawings, specifications, etc.) contained in this manual is subject to change without notice.

Read the following carefully to prevent serious injury or death.

### SAFETY PRECAUTIONS

Familiarization with safety instructions before installing and using the tracks will help prevent most accidents. Those who are not familiar with the manual and instructions should refrain from using the tracks.

Never install the tracks on a vehicle weighing more than 7000 lbs including the tracks, or load more than 3500 lbs on the front or 3500 lbs on the rear.

Prolonged use of the tracks on non-snow-covered surfaces reduces the service life of wear components (slides, wheels and tracks).

Leave warning decals in place; replace them if necessary (see directives for your province or country).

Never allow a child to operate a vehicle (see the vehicle owner's manual and your province/country traffic code directives), nor allow an adult to ride without proper training.

Provide all safety and track/vehicle operating information to anyone who intends to use the product.

Ensure that the areas planned for hiking or excursions are free of all persons, children, and domestic animals.

Refrain from using the vehicle while under the influence of alcohol, drugs, or medication.

Wear clothing appropriate for the season.

Never put your hands or feet near moving tracks to avoid serious injury.

Make sure shirt sleeves, coats, scarves, shoelaces, etc. cannot get caught in the track's moving parts.

Always carry a first-aid kit, a cell phone, a hatchet, basic tools, safety matches, kindling, and a tow cable to handle any situation.

When leaving the vehicle suddenly, disengage it, apply the parking brake, stop the engine and remove the ignition key.

Use caution when crossing public and private roads (for private roads, do not use them if prohibited). Crossing railway tracks is strictly forbidden by law.

In unfamiliar terrain, use extra caution and reduce speed.

Off the beaten trails or in remote areas, watch for obstacles buried under the snow: stumps, large rocks, fallen trees, fences, ditches and others.

Before venturing out on a long trip, familiarize yourself with track handling in safe terrain near your residence. Driving on tracks differs from driving on tires.

If the vehicle becomes unstable during an excursion, stop, shut off the engine and identify the cause.

During an excursion, it is recommended not to follow another vehicle too closely to avoid being hit by debris ejected by the tracks.

## **PREVENTIVE MAINTENANCE**

To de-ice track components, shut off the vehicle engine, apply the parking brake and remove the ignition key. Do not use your hands or feet; instead use a piece of wood or any other rigid non-metallic object.

Do not make any adjustment to the tracks if the vehicle engine is running and the parking brake is not applied.

Regularly inspect bolts and retighten them if necessary to avoid major damage.

Ensure the equipment is in good condition to operate safely.

Nordtrack is not responsible for any change in VEHICLE behavior that may result from track traction.

Respect the towing capacity recommended by the VEHICLE manufacturer, even when equipped with tracks.

Do not drive over stumps, branches, or rocky terrain as there is a risk of damaging the tracks or their mechanism.

When traveling off-trail or in remote areas, respect the environment and do not damage vegetation or disturb wildlife.

## **INSTALLATION**

Never position yourself fully or partially under the vehicle unless it is supported by safety stands. A vehicle that collapses or moves could cause serious injury. Do not use the lifting jack as a safety support.

Before starting track installation, turn off the engine and remove the key to prevent asphyxiation from odorless, colorless but deadly exhaust gases; allow the engine and exhaust pipe to cool to avoid burn hazards.

Wear appropriate work clothing during assembly: safety glasses, steel-toe boots, gloves, etc.

Make sure shirt sleeves, coats, scarves, shoelaces, etc. cannot get caught in moving parts.

During track installation, do not spin the tracks using vehicle power until they are on the ground and you are seated in the driver's seat.

Do not make any adjustment to the tracks while the VEHICLE engine is running and the parking brake is not engaged.

Apply thread locker to all bolts and nuts you install (LOCTITE 242, blue).

Make sure the tracks are properly tensioned so they stay in position on the bogie wheels.

To install the tracks on the **VEHICLE**, choose a clean location with a level surface, well lit and ventilated. Place the **VEHICLE** in N (neutral), stop the engine, remove the key, apply the parking brake, and install wheel chocks in front of and behind the wheels that will remain on the ground.

No modifications to the **VEHICLE** are required to install the tracks. First identify the front and rear tracks as well as left and right **IF NECESSARY**.

If the bottom of the fenders touches the tracks, the fenders will need to be trimmed slightly.

## OPERATION



---

The assembly, installation and adjustment of the tracks must be done by an experienced mechanic.

Driving with tracks differs significantly from driving with tires. It is strongly recommended to take time to get accustomed to the new driving conditions.

## MAINTENANCE

Always make sure tracks are properly adjusted and tightened before use.

### Track tension

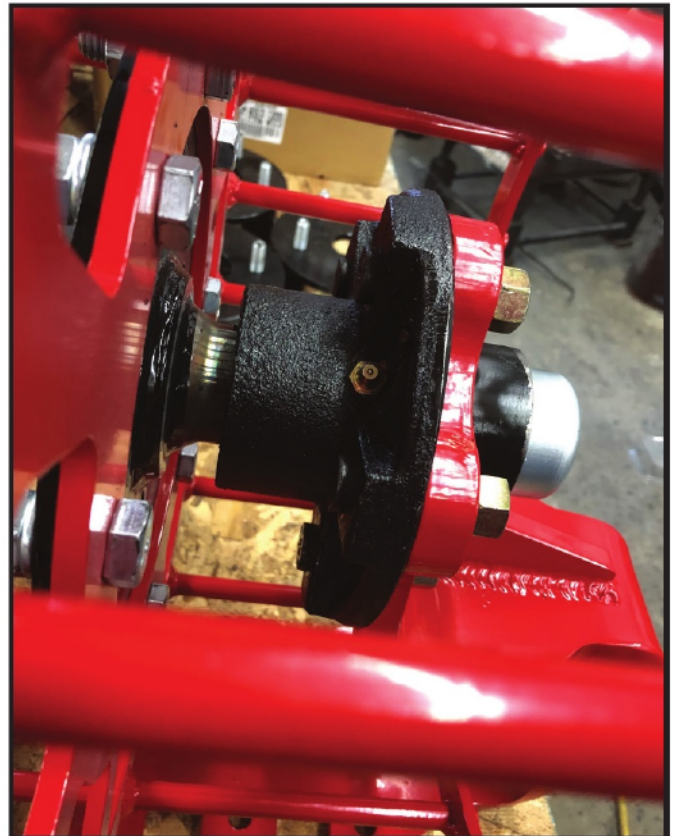
See the photo opposite. Ensure the rubber track is well tensioned; it should not be loose. Excessive tension can lead to premature wear.

### Hardware condition check

Inspect the condition of wheel bearings and ensure all bolts are tightened. Once per year, clean and grease the wheel bearings.

### Cleaning

To extend the life of the track rubber, use only soapy water for cleaning.



## Cleaning

To extend the life of the track rubber, use only soapy water for cleaning.

It is the driver's responsibility to follow the maintenance plan described in this manual.

## REMOVAL

Before removing the track system, shut off the engine and remove the ignition key.

To remove the track system, follow the same safety instructions as for assembly (see installation/removal, p. 12).

To prevent deterioration, store the track system protected from the elements, ready for the next season; this is also a good time to inspect it and check the condition of the hardware. Grease the hub ball bearings once per year.

## HAZARDOUS SITUATIONS

It is strictly forbidden to jump a vehicle equipped with tracks. The tracks were not designed to support this type of use. On a steep descent, it is recommended to keep the steering wheel straight and begin turning when the vehicle reaches flat ground.

If the vehicle must be towed, never pull it in the direction it is leaning. Pull it in the direction it was facing before getting stuck—preferably along the tracks left behind before the vehicle became bogged down. If the rear of the system sinks into the snow, avoid moving or towing the vehicle to free it, as this could cause the system to go out of adjustment. If possible, move it straight forward to free it. It is recommended to remove accumulated snow from the top of the rear tracks and compact the snow in front with your feet to help free them. A shovel remains the best tool here.

It is not recommended to drive over obstacles such as logs, large rocks, or sharp ridges that could jam and immobilize the vehicle. The best approach is to go around such obstacles.

If the vehicle is equipped with anti-rotation arms on the tracks, never exceed their capacity, as this could cause failure of the vehicle or the system. It is recommended to use the vehicle on terrain where the tracks can rest flat.

NOTE: Failure to comply with recommended use may void the warranty.

# WARRANTY

Nordtrack warrants that a new Nordtrack system, approved for the vehicle and intended use, is free from defects in materials and workmanship, under the period and conditions described below.

By using a new Nordtrack system, the user acknowledges that the terms and conditions of this document are applicable and exclusive, that they have been communicated to them and that they were accepted at the time of purchase.

The Nordtrack track system is covered by the manufacturer's warranty. The warranty protects against defects in materials and workmanship. Installation and maintenance of the system remain the sole responsibility of the owner.

For components not manufactured by Nordtrack, only the third-party manufacturer has authority to determine whether or not there is a manufacturing defect.

## COVERAGE PERIOD

Valid for twelve (12) months from the purchase date. This does not apply to normal wear.

Wear components are excluded (tracks, wheels, sliders, bearings). Paint defects (on chassis and components) are not covered.

The warranty is not valid if the system is not approved for the vehicle and intended use by an authorized Nordtrack distributor or dealer.

This warranty specifically excludes coverage for any damage or breakage to the vehicle, or any associated defect, whether caused or thought to be caused by the system. The manufacturer is not responsible for damages, injuries or losses occurring during or after installation.

Installing tracks may void the vehicle manufacturer's warranty.

To be valid, the system owner must follow manufacturer recommendations and heed warnings. Any claim must be accompanied by proof of purchase (original receipt or sales contract) and any work or repair must be performed by an authorized Nordtrack dealer. Any claim not pre-approved and authorized by Nordtrack will be rejected.

The following situations are not covered:

1) Any consequential damage, including but not limited to indirect costs such as towing, storage, telephone calls, rentals, transportation, inconvenience, insurance

- 3) Damage resulting from normal wear of parts or progressive deterioration related to distance traveled with a vehicle on which the system is installed;
- 4) Damage resulting from abusive or abnormal use, negligence or use not in accordance with the manual recommendations, excessive load or overloading including passenger overload;
- 5) Labor, parts and materials related to any maintenance costs;
- 6) Breakage resulting from improper repair, neglected maintenance, unauthorized modification to the system, modification other than those specified by the manufacturer, or installation of unauthorized or non-original parts not manufactured or approved by Nordtrack;
- 7) Breakage resulting from an accident, incident, theft, vandalism, war, unforeseen event or act of God;
- 8) Regardless of cause, breakage resulting from inexperience, driving errors, an accident or an incident;
- 9) Use of the system for racing, rallying or any other competition cancels and voids the warranty;

Any repaired or replaced part is warranted only for the remaining portion of the original warranty. Example: if a part is replaced five (5) months after purchase, the replacement is covered for the remaining seven (7) months.

The warranty never extends beyond twelve (12) months from the original purchase date.

Warranty is limited to the lesser of the original purchase price or the market value of the system (as determined by Nordtrack). If the system becomes unusable due to an accident or improper repair, the warranty is null and void.

The manufacturer, retailer and/or repair shop will not be held responsible for delays caused by temporary unavailability of parts, components or any equipment.

Handling and shipping fees, and any costs related to shipping or transporting the system to the dealer, remain the responsibility of the system owner. Nordtrack reserves the right to update this warranty; the terms in effect at the time of purchase will be respected.

# INSTALLATION/REMOVAL

- 1** Stop the vehicle engine;  
Shift to neutral;  
Apply the parking brake;  
Lift the vehicle using a jack suitable for the application.



- 2** Secure the vehicle using appropriate jack stands;



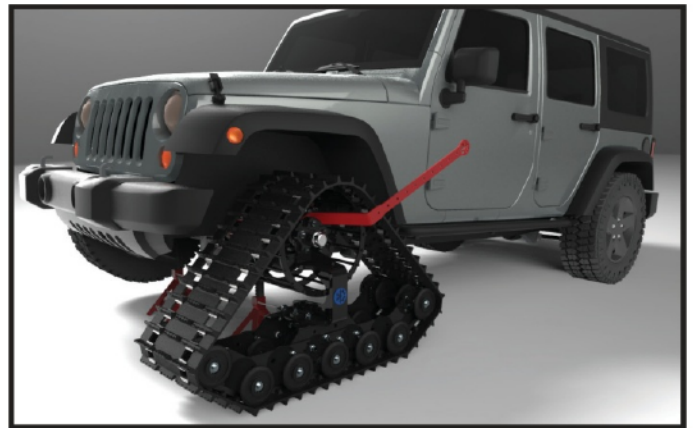
- 3** Remove the wheel from the hub;  
Depending on the supplied adapter, lug nuts may not be required;



- 4** Install the adapter on the hub;  
Tighten properly following the vehicle manufacturer's recommendations, using the supplied nuts if required;



- 5** Install the track on the hub;  
Tighten the nuts using the supplied tool;  
Verify track orientation:  
front/rear, left/right.



- 6** Repeat the process for each wheel.



## OPTIONAL ANTI-ROTATION ARM

If the tracks are equipped with anti-rotation arms, maximum travel is adjusted by changing chain length.

Adjustment must be done BEFORE any use;

The anti-rotation system is a protective device and does not replace the user's good judgment; the system's capabilities must not be exceeded.



## EXPLODED VIEWS PARTS IDENTIFICATION

The next eight pages provide a detailed view of all components of the NORDTRACK track system.

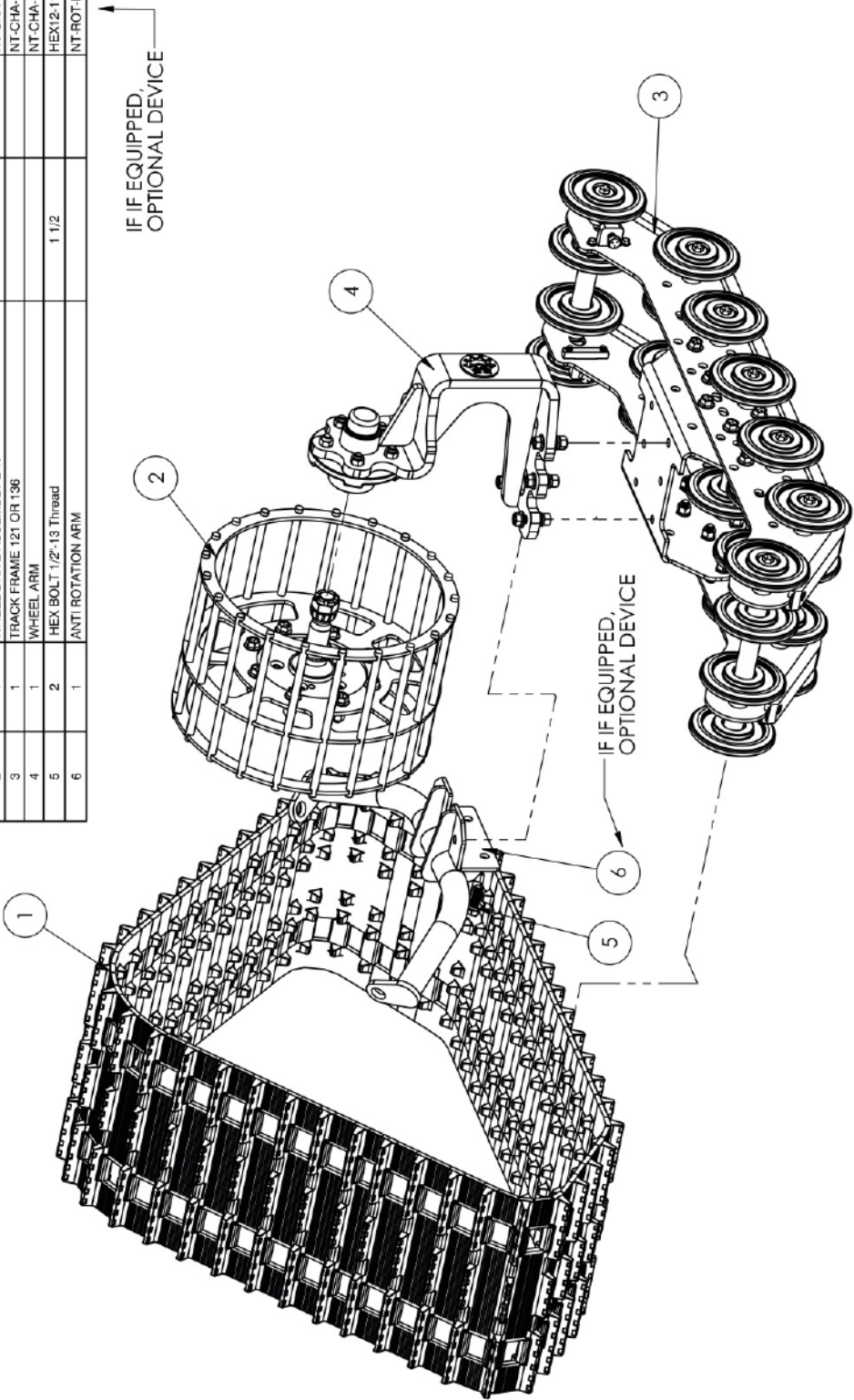
Always refer to these documents when ordering a replacement part.

Parts can be ordered by phone at 1 866 306 7392.

2.

**QTE REQUIRE:**

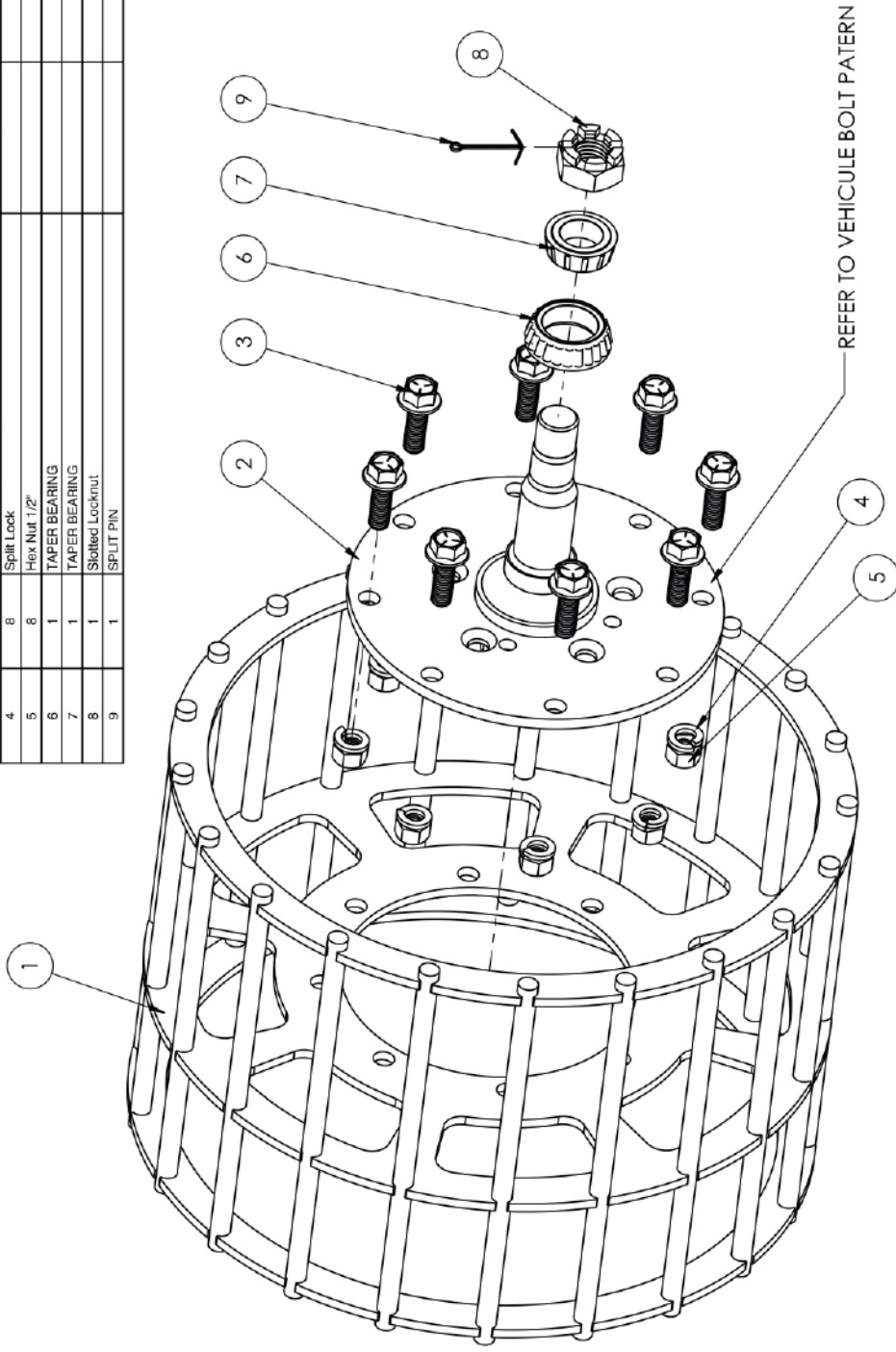
ITEM	Défaut/QTE:	DESCRIPTION	LENGHT	MAT'L	# PART
1	1	TRACK CAMOPLAST 121" OR 136"			chenille camoplast 121x15-p1 - 136x15-p1
2	1	WHEEL DRIVE ASSEMBLY L 17"			NT-CHA-MEC-S002
3	1	TRACK FRAME 121 OR 136			NT-CHA-MEC-S001 - S004
4	1	WHEEL ARM			NT-CHA-MEC-S003
5	2	HEX BOLT 1/2"-13 Thread	1 1/2		HEX12-112
6	1	ANTI ROTATION ARM			NT-ROT-P001



<b>POIDS:</b> 216.274 LBS <b>COULEUR:</b>	Ce dessin est confidentiel et ne doit pas être reproduit ou utilisé sans le consentement de SDI	SERVICE DE DESSIN INDUSTRIEL 692 Principale 691 Prime (QUÉBEC) TEL: (418) 251-3222 CELL: (418) 618-3222 FAX: (418) 251-1501 E-MAIL: pimantel.sdi@gmail.com WEB: www.sdi-3d.com
	CONÇU PAR: _____ DATE: 25 Juin 2015 19:22:09 DESSINÉ PAR: _____ 3 avril 2016 14:57:54 APPROUVÉ: _____ PROJET: _____	ASSEMBLAGE FINAL
TOLERANCES GENERALES SI NON INDIQUEES PREPARATION ET ASSEMBLAGE 0 à 1" ± 0,02" 1" à 24" ± 0,05" 24" et plus ± 0,10" ANGLE ± 1°	USINAGE 0,7" ± 0,05" 0,00" ± 0,015" 0,000" ± 0,005" 1° ± 1°	ED-ELLE 1:10 DESSIN NO: NordTrack 121-2015-rev-0.00 PAGE: 1/8

**QTE REQUIRE:**

ITEM	QTE.	DESCRIPTION	LENGHT	MATL	# PART
1	1	DRIVE WHEEL 17"			NT-ENT-S001
2	1	DRIVE SHAFT			NT-ENT-S002
3	8	HEX BOLT 1/2"-13 Thread	1 1/2		HEX12-112
4	8	Split Lock			SP-1/2
5	8	Hex Nut 1/2"			NT-EC-1-2
6	1	TAPER BEARING			NT-L68149
7	1	TAPER BEARING			NH-L4649
8	1	Splitbed Locknut			NT-BLF.001
9	1	SPLIT PIN			NT-CP-1



<b>POIDS:</b>	37.781 LBS
<b>COULEUR:</b>	
<b>TOLERANCES GENERALES SI NON INDIQUEES</b>	
<b>PREPARATION ET ASSEMBLAGE</b> 0.1" ± 0.05" 1" ± 0.015" 2" ± 0.015" ANGLE ± 1°	<b>USINAGE</b> 0.0" ± 0.05" 0.0" ± 0.015" 0.000" ± 0.005" ANGLE ± 0.5°
T = EPASSEUR DE LA PLAQUE LA PLUS MINCE T = EPASSEUR DE LA PLAQUE LA PLUS MINCE	

Ce dessin est confidentiel et ne doit pas être reproduit ou utilisé sans le consentement de SDI	
CONÇU PAR: _____ DESINÉ PAR: _____ APPROUVÉ: _____ PROJET: _____	DATE: 28 Juin 2015 16:01:22 3 Oct 2016 14:57:54



**SDI**  
 SERVICE DE DESSIN INDUSTRIEL  
 WWW.SDI-3D.COM

Service de Dessin Industriel  
 692 Principale  
 Saint-Prime (QUEBEC)  
 G8J 1T5  
 TEL: (418) 251-3229  
 CELL: (418) 251-3222  
 FAX: (418) 251-1501  
 E-MAIL: pimanuel.sdi@gmail.com  
 WEB: www.sdi-3d.com

**WHEEL DRIVE ASSEMBLY L 17"**

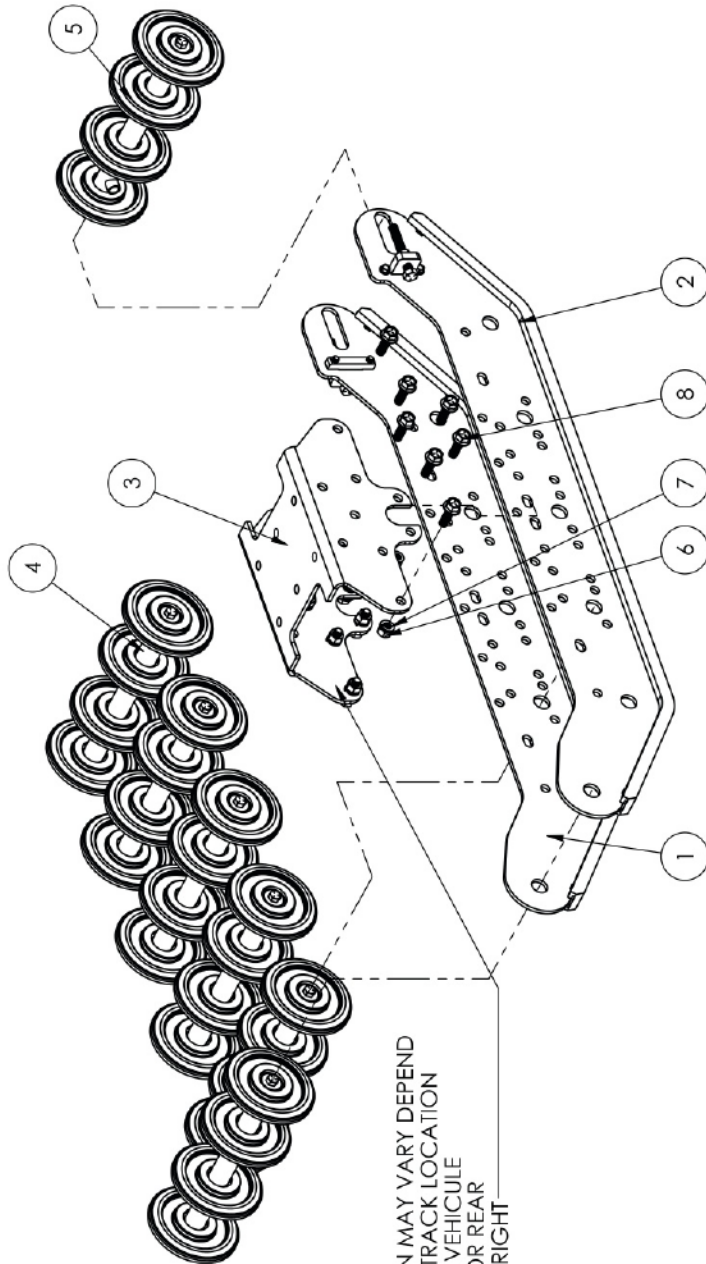
ECHELLE: 1:4

DESIGN NO: NordTrack 121-2015-rev-0.00

PAGE: 2/8

**QTE REQUIRE:**

ITEM	3/QTY.	DESCRIPTION	LONGUEUR	MAT'L	# PIÈCE
1	1	RIGHT TRACK FRAME 121 OR 136			NT-PRO-S000-D OR S001-D
2	1	LEFT TRACK FRAME 121 OR 136			NT-PRO-S000-G OR S001-G
3	1	CROSSMEMBER			NT-CHA-P001
4	6	WHEEL ASSEMBLY			NT-ROU-S000
5	1	TENSION WHEEL ASSEMBLY			NT-ROU-S000-ARR
6	14	Hex Nut 1/2"			NT-EC-1-2
7	14	Split Lock			SP-1/2
8	14	HEX BOLT 1/2"-13 Thread	1 1/2		HEX12-112



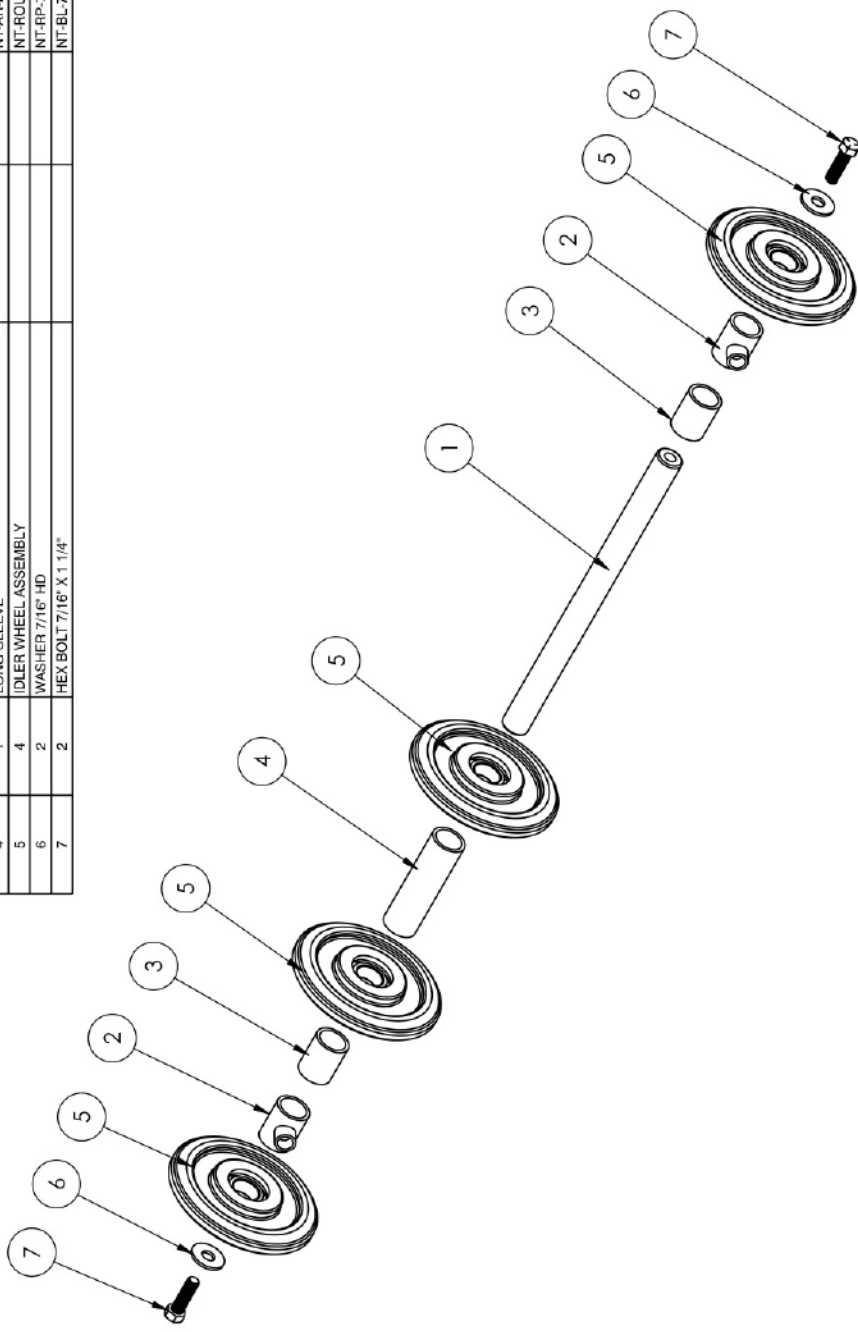
POSITION MAY VARY DEPEND OF THE TRACK LOCATION ON THE VEHICLE FRONT OR REAR LEFT OR RIGHT

<b>POIDS:</b> 95.370 LBS		Ce dessin est confidentiel et ne doit pas être reproduit ou utilisé sans le consentement de SDI	
<b>COULEUR:</b>		DATE: 28 Juin 2015 15:38:48	SDI SERVICE DE Dessin INDUSTRIEL
TOLERANCES GENERALES SI UNES INDIQUEES		COINCU PAR: _____	Service de Dessin Industriel 522 Principale Sudbrome (QUEBEC) G8V 1T5 TEL: (418) 251-3222 CELL: (418) 618-3222 FAX: (418) 251-1501 E-MAIL: phinarel.sdi@gmail.com WEB: www.sdi-3d.com
PREPARATION ET ASSEMBLAGE	USINAGE	DESSINE PAR: _____	TRACK FRAME 121 OR 136
0 a 1" ± 0.07	0.7" ± 0.03	APPROUVE: _____	
1" a 24" ± 0.005	0.00" ± 0.015	PROJET: _____	
24" et plus ± 0.005	0.000" ± 0.005		
ANGLE 1°	✓		
T = EPAISSEUR DE LA PLAQUE LA PLUS MINCE t = EPAISSEUR DE LA PLAQUE LA PLUS MINCE			
Echelle: 1:10		Dessin No: NordTrack-121-2015-rev-0.00	
		PAGE: 378	



**QTE REQUIRE:**

ITEM	QTE.	DESCRIPTION	LONGUEUR	MAT'L	# PIÈCE
1	1	IDLER WHEEL SHAFT			NT-AR-P001
2	2	SHORT SLEEVE TENSION			NT-ROU-S001-000
3	2	SHORT SLEEVE			NT-AR-P002
4	1	LONG SLEEVE			NT-AR-P003
5	4	IDLER WHEEL ASSEMBLY			NT-ROU-S001
6	2	WASHER 7/16" HD			NT-RP-7-16-HD
7	2	HEX BOLT 7/16" X 1 1/4"			NT-BL-7-16X1-1-4



**POIDS:** LBS

**COULEUR:**

TOLERANCES GENERALES SI NON INDIQUEES	USINAGE
PREPARATION ET ASSEMBLAGE	
0.1" ± 1/32"	0.0" ± 0.05"
1" ± 24"	0.00" ± 0.015"
24" et plus ± 1/8"	0.000" ± 0.005"
ANGLE ± 1°	

✓  $\frac{1}{16}$  T = EPAISSEUR DE LA PLAQUE LA PLUS MINCE  
✓  $\frac{1}{16}$  T = EPAISSEUR DE LA PLAQUE LA PLUS MINCE

Ce dessin est confidentiel et ne doit pas être reproduit ou utilisé sans le consentement de SDI

CONÇU PAR: DATE: 14 mars 2014 20:30:27  
 3 avril 2016 14:57:54

DESSINÉ PAR: APPROUVÉ: PROJET:

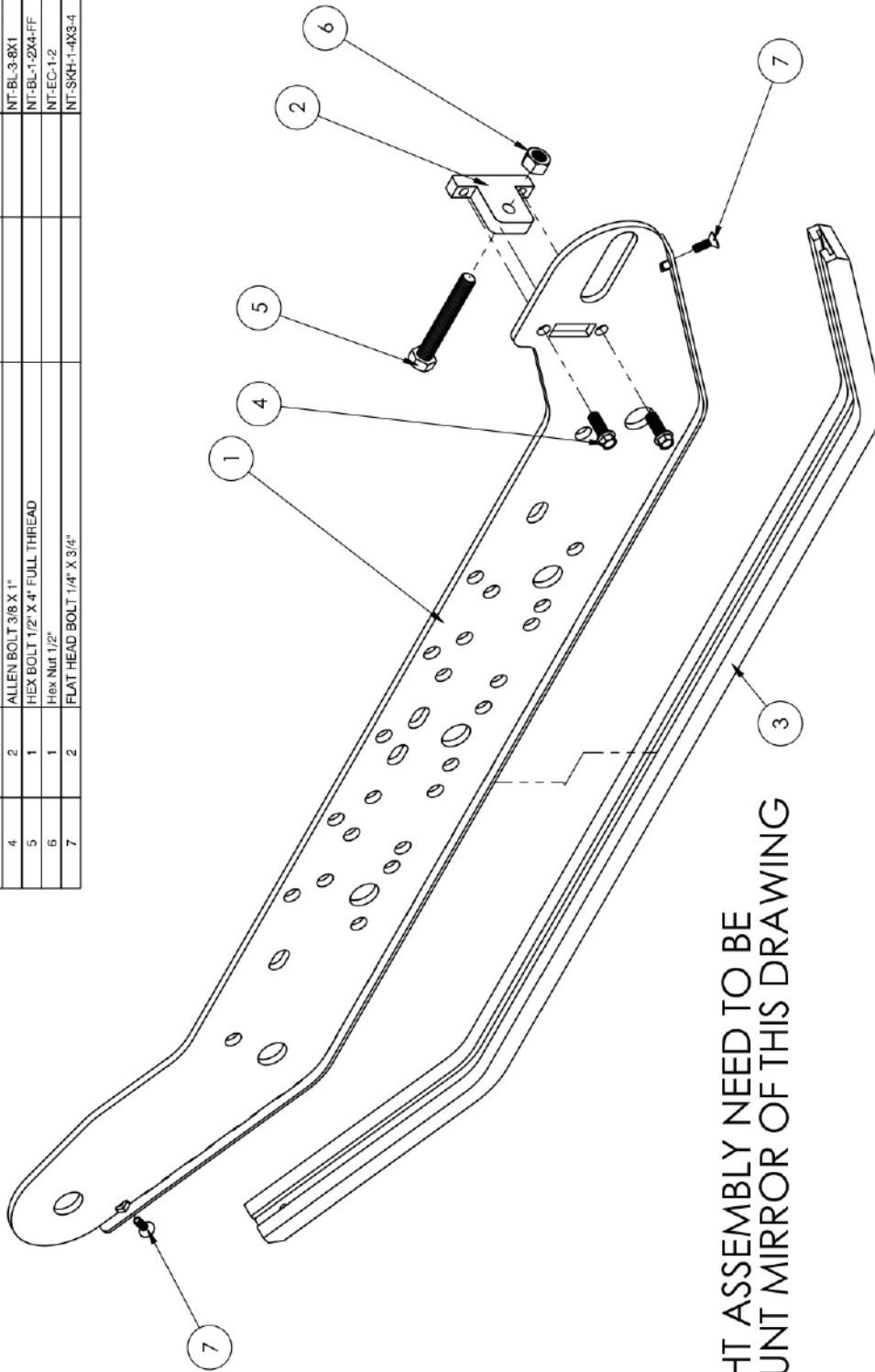
**SDI** Service de Dessin Industriel  
 692 Principale  
 Saint-Prime (QUÉBEC)  
 G5J 1T5  
 TEL: (418) 251-8222  
 FAX: (418) 251-9202  
 E-MAIL: sdimantel.sdi@gmail.com  
 WEB: www.sdi-3d.com

**TENSION WHEEL ASSEMBLY**

ECHELLE: 1-6      DESSIN NO: NordTrack 121-2015-rev-0.00      PAGE: 5 / 8

**QTE REQUIRE:**

ITEM	QTE.	DESCRIPTION	LONGUEUR	MAT'L	# PIÈCE
1	1	TRACKFRAME 121 OR 136			NT-PRO-S001-000 OR S002
2	1	TENSIONER			NT-TEN-P001
3	1	SLIDE 121' OR 136"			NT-SLJ-P001-121 OU 136
4	2	ALLEN BOLT 3/8" X 1"			NT-BL-3-8X1
5	1	HEX BOLT 1/2" X 4" FULL THREAD			NT-BL-1-2X4-FF
6	1	Hex Nut 1/2"			NT-EC-1-2
7	2	FLAT HEAD BOLT 1/4" X 3/4"			NT-SKH-1-4X3-4



**RIGHT ASSEMBLY NEED TO BE MOUNT MIRROR OF THIS DRAWING**

<b>POIDS:</b>	20.210 LBS
<b>COULEUR:</b>	
TOLERANCES GENERALES SI NON INDIQUEES	
PREPARATION ET ASSEMBLAGE	USINAGE
0.31" ± 0.05"	0.0" ± 0.05"
1.32" ± 0.07"	0.07" ± 0.015"
1.71" ± 0.005"	0.000" ± 0.005"
24° et plus ± 1°	15°
ANGLE	15°
CT = ÉPAISSEUR DE LA PLAQUE LA PLUS MINCE CT = ÉPAISSEUR DE LA PLAQUE LA PLUS MINCE	

Ce dessin est confidentiel et ne doit pas être reproduit ou utilisé sans le consentement de SDI	
CONÇU PAR:	DATE: 24 décembre 2014 10:37:54
DESSINÉ PAR:	3 avril 2014 14:57:54
APPROUVÉ:	
PROJET:	

**Service de Dessin Industriel**  
 692 Principale  
 Saint-Prime (QUÉBEC)  
 Q.B. J4R 9J 261-3222  
 CELL: (418) 618-3222  
 FAX: (418) 251-1501  
 E-MAIL: pimanet.sdi@gmail.com  
 WEB: www.sdi-3d.com

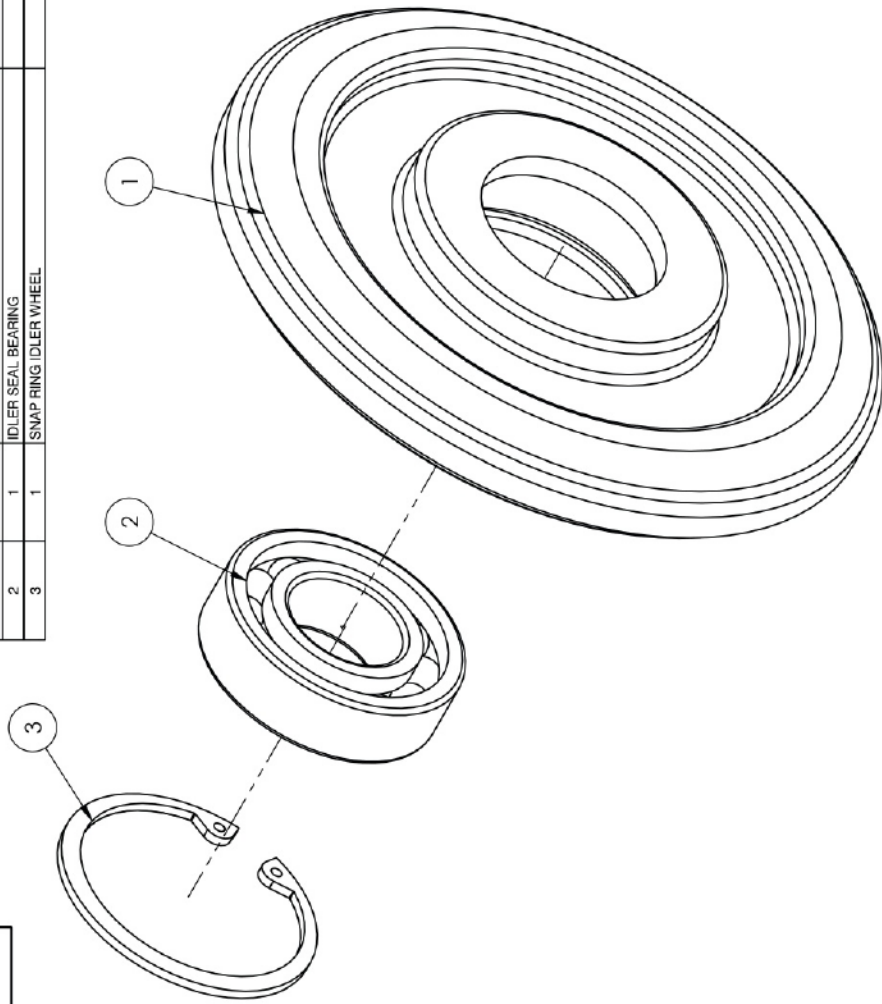
---

**LEFT TRACK FRAME 121 OR 136**

ÉCHELLE: 1:5	DESSIN NO: NordTrack 121-2015-rev-0.00	PAGE: 6/8
--------------	--	-----------

**QTE REQUIRE:**

ITEM	QTE.	DESCRIPTION	LONGUEUR	MATL	# PIECE
1	1	IDLER WHEEL			NT-ROU-5630
2	1	IDLER SEAL BEARING			NT-BEA-001
3	1	SNAP RING IDLER WHEEL			NT-SR-P001



<b>POIDS:</b>	1.056 LBS
<b>COULEUR:</b>	
<b>TOLERANCES GENERALES</b> SI NON INDIQUEES	
<b>PREPARATION ET ASSEMBLAGE</b> 0.1° ± 1.0° 1.5, 2° ± 1.0° 24° 6 PLUS ± 1.0° ANGLE ± 1°	<b>USINAGE</b> 0.0° ± 0.05° 0.0° ± 0.05° 0.000° ± 0.005° 1.0° ± 1.0°
T = ÉPaisseur de la plaque la plus mince T = Épaisseur de la plaque la plus mince	

Ce dessin est confidentiel et ne doit pas être reproduit ou utilisé sans le consentement de SDI	
CONCILU PAR: _____ DESSEIN PAR: _____ APPROUVE: _____ PROJET: _____	DATE: 7 janvier 2015 21:26:44 3 avril 2016 14:57:54



**SERVICE DE DESSIN INDUSTRIEL**

Service de Dessin Industriel  
 692 Principale  
 Saint-Prime (QUÉBEC)  
 G8U 1T5  
 TEL: (418) 251-3222,  
 (418) 251-9122,  
 (418) 251-9122,  
 FAX: (418) 251-9122,  
 E-MAIL: [dimatel.sdi@gmail.com](mailto:dimatel.sdi@gmail.com)  
 WEB: [www.sdi-3d.com](http://www.sdi-3d.com)

**IDLER WHEEL ASSEMBLY**

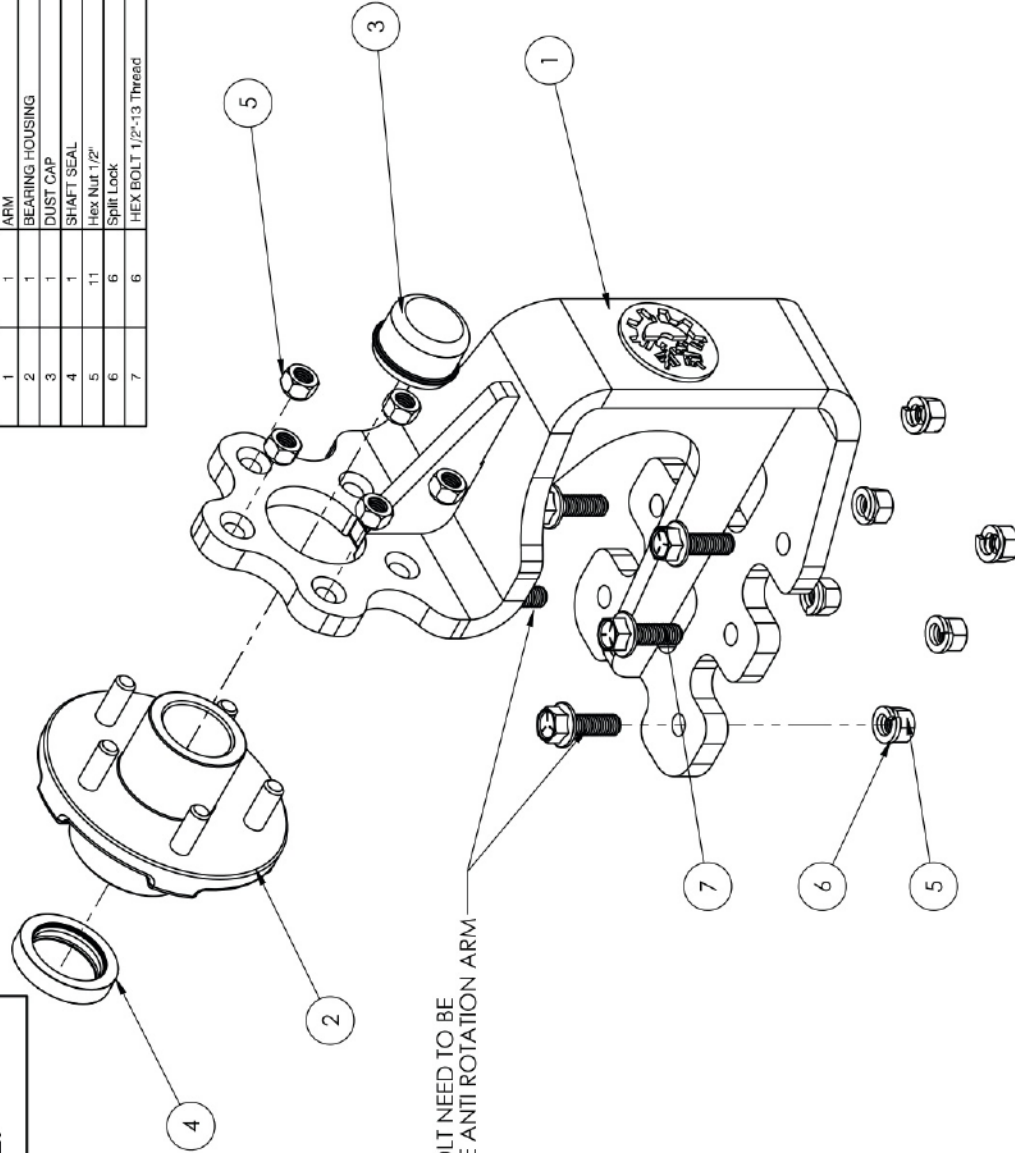
ECHELLE: 3:4

DESSIN NO: NordTrack 121-2015-rv-0.00

PAGE: 7/8

**QTE REQUIRE:**

ITEM	QTE.	DESCRIPTION	LONGUEUR	# PIÈCE
1	1	ARM		NT-CHA-8001
2	1	BEARING HOUSING		NT-ENT-P001
3	1	DUST CAP		NT-ENT-P002
4	1	SHAFT SEAL		NT-1.72X2.5625-SEAL
5	11	Hex Nut 1/2"		NT-EC-1-2
6	6	Split Lock		SP-1/2
7	6	HEX BOLT 1/2"x13 Thread	1 1/2	HEX12-112



THE 2 REAR BOLT NEED TO BE 2" LONG IF USE ANTI ROTATION ARM

POIDS: 36.735 LBS

COULEUR:

TOLERANCES GENERALES SI NON INDIQUEES	USINAGE
PREPARATION ET ASSEMBLAGE	
0.1" ± 0.05"	0.07" ± 0.05"
1" ± 0.04"	0.04" ± 0.015"
24" et plus	0.002" ± 0.005"
ANGLE	1°

PROJET: \_\_\_\_\_

DATE: 28 Jun 2015 16:25:45

3 DVI 2016 14:57:54

CONCU PAR: \_\_\_\_\_

DESINE PAR: \_\_\_\_\_

APPROUVE: \_\_\_\_\_

PROJET: \_\_\_\_\_

Ce dessin est confidentiel et ne doit pas être reproduit ou utilisé sans le consentement de SDI



Service de Dessin Industriel  
892 Principale  
Saint-Prime (QUEBEC)  
Q8J 1J6 • 251-9222  
CELL: (418) 619-3222  
FAX: (418) 251-1501  
E-MAIL: pimartei.sdi@gmail.com  
WEB: www.sdi-3d.com

WHEEL ARM







**NORD TRACK**